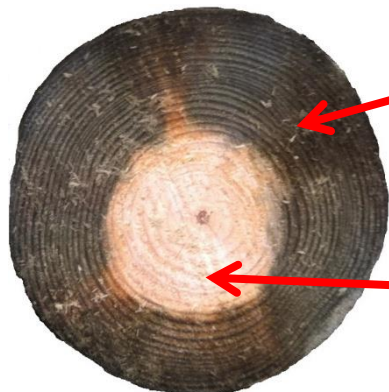


# Peppard BS Ltd

## WHY CHOOSE PINE UC4?



Kiln Dried Pine offers 100% Sapwood penetration of the Chemical treatment, not possible with Spruce. Sapwood is the part of the timber which is non durable and most susceptible to fungal and insect attack it needs to be protected.

Heartwood is the part of the timber which provides structural support for the tree – it is naturally durable and resistant to decay.

**15 YEAR MATERIAL  
REPLACEMENT  
WARANTY\***



**CORRECT SPECIES  
FOR IN GROUND  
CONTACT**



**MEETS BRITISH  
STANDARD  
BS8417**



*\*Terms & Conditions Apply*

How to Identify a.....

# Peppard BS Ltd

UC4 **PINE** POST



Each individual post is end stamped with a logo and a three digit number. The first two digits are the year of manufacture, the final digit refers to either the first or second half of that year. Ensuring each post can be effectively traced.

## Technical Details:

**User Class 4 Kiln Dried Pine  
(15year Warranty)**

This material is produced from Imported Pine sourced predominantly from Eastern Europe where the trees are exposed to a much colder environment than that of the UK. These lower temperatures result in a slower growing process and therefore a stronger material. Pine is naturally both durable (heartwood) and permeable (Sapwood) making it the most viable - commercially available timber to treat for "in ground" applications. The Pine is kilned to 28% moisture content removing the "free" water from between the cells – further strengthening the pieces and ensuring it is in the optimum state to receive the chemical treatment. The timber is placed into the high pressure vessel where it is exposed to a long pressure cycle and a concentrated chemical treatment solution to provide the optimum resistance to attack from fungi and insects. The resulting premium product offers the very best protection in line with British Standard BS8417 for "in ground" contact use and carries a 15 year warranty\*

*\*Terms & Conditions Apply*